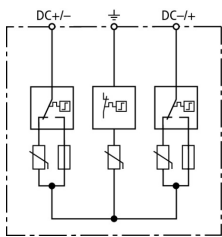


DG YPV SCI 1000 (950 530)

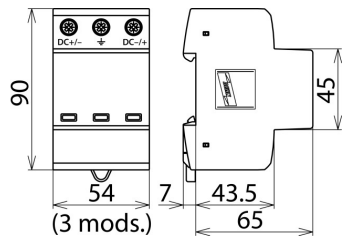
- Prewired complete unit for use in photovoltaic systems
- Combined disconnection and short-circuiting device with safe electrical isolation prevents fire damage resulting from d.c. arcs (patented SCI principle)
- Can be used without backup fuse up to $I_{SCPV} = 200\text{ A d.c.}$



Figure without obligation



Basic circuit diagram DG YPV SCI 1000



Dimension drawing DG YPV SCI 1000

Multipole surge arrester with three-step d.c. switching device for use in PV systems

Type	DG YPV SCI 1000
Part No.	950 530
SPD according to EN 50539-11	type 2
Max. PV voltage (U_{CPV})	$\leq 1000\text{ V}$
Short-circuit current rating (I_{SCPV})	200 A
Total discharge current (8/20 μs) (I_{total})	40 kA
Nominal discharge current (8/20 μs) [(DC+/DC-) \rightarrow PE] (I_n)	12.5 kA
Maximum discharge current (8/20 μs) [(DC+/DC-) \rightarrow PE] (I_{max})	25 kA
Voltage protection level (U_P)	$\leq 4\text{ kV}$
Voltage protection level at 5 kA (U_P)	$\leq 3.5\text{ kV}$
Response time (t_A)	$\leq 25\text{ ns}$
Operating temperature range (T_U)	$-40\text{ }^{\circ}\text{C} \dots +80\text{ }^{\circ}\text{C}$
Operating state / fault indication	green / red
Number of ports	1
Cross-sectional area (min.)	1.5 mm ² solid / flexible
Cross-sectional area (max.)	35 mm ² stranded / 25 mm ² flexible
For mounting on	35 mm DIN rails acc. to EN 60715
Enclosure material	thermoplastic, red, UL 94 V-0
Place of installation	indoor installation
Degree of protection	IP 20
Capacity	3 mod(s), DIN 43880
Approvals	KEMA, UL
Weight	300 g
Customs tariff number	85363030
GTIN	4013364152960
PU	1 pc(s)

We reserve the right to introduce changes in performance, configuration and technology, dimensions, weights and materials in the course of technical progress. The figures are shown without obligation.