



DPRO 230 TV (909 300)

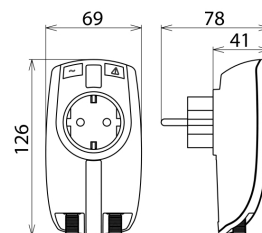
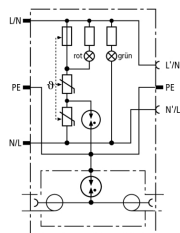
Protection of TV, radio or SAT applications with a modern design

F socket to IEC plug adapter included

For installation in conformity with the lightning protection zones concept at the boundaries from 2 – 3 and higher



Figure without obligation



Combined surge protection for the power and antenna side of TV, radio or SAT receivers. With visual operating state and fault indication.

Protection of the data side

Type	DPRO 230 TV
Part No.	909 300
Max. continuous operating d.c. voltage (U_c)	60 V
Insertion loss 0-2400 MHz	≤ 1.5 dB
Operating temperature range	-25°C...+40°C
Degree of protection	IP 20
Connection (input / output)	F socket / F socket
Earthing via	protective conductor connection
Enclosure material	thermoplastic, UL 94 V-2
Colour	pure white
Test standards	IEC 61643-21 / EN 61643-21

Protection of the power side

Type	DPRO 230 TV
Part No.	909 300
SPD according to EN 61643-11	Type 3
SPD according to IEC 61643-1	Class III
Nominal a.c. voltage (U_N)	230 V
Max. continuous operating a.c. voltage (U_c)	255 V
Nominal load current a.c. (I_L)	16 A
Nominal discharge current (8/20 μ s) (I_n)	3 kA
Total discharge current (8/20 μ s) [L+N-PE] (I_{total})	5 kA
Combined impulse (U_{oc})	6 kV
Combined impulse [L+N-PE] ($U_{oc total}$)	10 kV
Voltage protection level [L-N] (U_p)	≤ 1.25 kV
Voltage protection level [L/N-PE] (U_p)	≤ 1.5 kV
Response time [L-N] (t_l)	≤ 25 ns
Response time [L/N-PE] (t_A)	≤ 100 ns
Max. mains-side overcurrent protection (I)	16 A gL/gG or B 16 A
Short-circuit withstand capability for mains-side overcurrent protection	6 kA _{rms}
Temporary overvoltage (TOV) [L-N] (U_T)	335 V / 5 sec.
Temporary overvoltage (TOV) [L/N-PE] (U_T)	400 V / 5 sec.
Temporary overvoltage (TOV) [L+N-PE] (U_T)	1200 V + U_{CS} / 200 ms
TOV characteristic [L-N]	withstand
TOV characteristic [L/N-PE]	withstand
TOV characteristic [L+N-PE]	safe
Fault indication	red indicator light
Operating state indication	green indicator light
Number of ports	1
For mounting on	plug-in systems with earth contact DIN 49440/DIN 49441
Test standards	EN 61643-11
Weight	233,8 g
Customs tariff number	85363010
GTIN	4013364117723
PU	1 pc(s)

We reserve the right to introduce changes in performance, configuration and technology, dimensions, weights and materials in the course of technical progress. The figures are shown without obligation.