

manufacturer test report

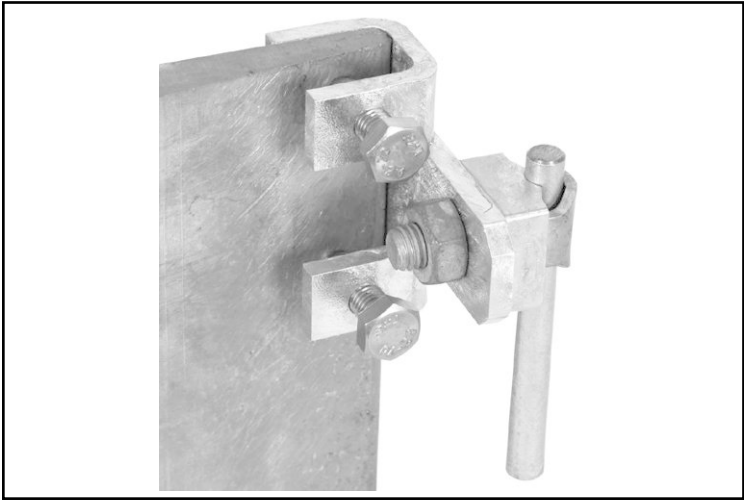
testing according to DIN EN 50164-1 (VDE 0185 part 201)

Anschlussklemme Part No. 372 250

material: St/tZn



DEHN + SÖHNE



non-binding figure

application: overground

conductor connected	test result
1st conductor : Rd 8 NIRO 2nd conductor : FI 30x30 St/tZn	N
1st conductor : Rd 8 Al 2nd conductor : FI 30x30 St/tZn	N
1st conductor : Rd 8 St/tZn 2nd conductor : FI 30x30 St/tZn	N

caption

withstand lightning current class H 100 kA (10/350 µs)  
withstand lightning current class N 50 kA (10/350 µs)  
Detailed data of testing conditions can be requested on demand.