

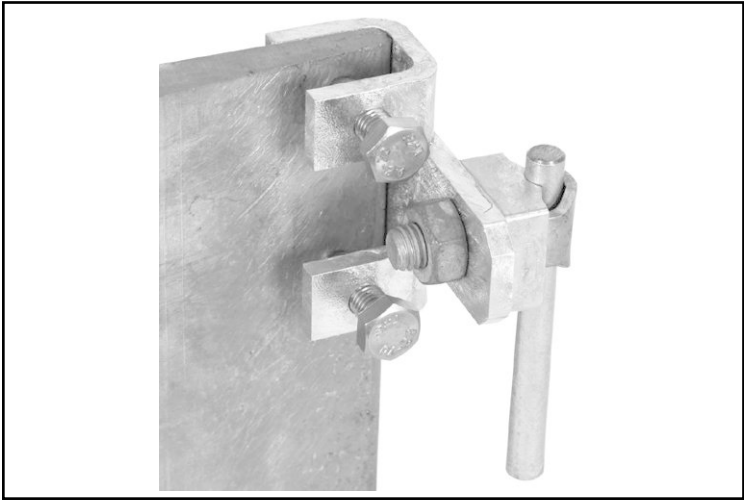
Anschlussklemme

Part No. 372 259

material: NIRO



DEHN + SÖHNE



non-binding figure

application: overground

| conductor connected | test result |
|--|-------------|
| 1st conductor : Rd 8 St/tZn 2nd conductor : FI 30x30 St/tZn | N |
| 1st conductor : Rd 8 NIRO 2nd conductor : FI 30x30 St/tZn | N |
| 1st conductor : Rd 8 Al 2nd conductor : FI 30x30 St/tZn | N |

caption

withstand lightning current class H 100 kA (10/350 µs)

withstand lightning current class N 50 kA (10/350 µs)

Detailed data of testing conditions can be requested on demand.