



## DPRO 230 NT (909 310)

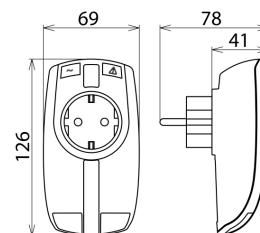
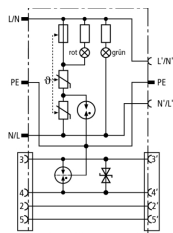
Protection of terminal equipment in telecommunications systems with a modern design

Includes accessories for RJ 11/12 and TAE connections

For installation in conformity with the lightning protection zones concept at the boundaries from 2 – 3 and higher



Figure without obligation



Combined surge protection for the power and data side of a digital network termination (NT). Also suited for telephones and fax machines. With visual operating state and fault indication.

### Protection of the data side

Type Part No.	DPRO 230 NT 909 310
Max. continuous operating d.c. voltage ( $U_C$ )	180 V
C2 Nominal discharge current (8/20 $\mu$ s) per line C2 ( $I_n$ )	2.5 kA
Voltage protection level line-line for $I_n$ C2 ( $U_p$ )	$\leq 300$ V
Voltage protection level line-PE for $I_n$ C2 ( $U_p$ )	$\leq 500$ V
Voltage protection level line-line at 1 kV/ $\mu$ s C3 ( $U_p$ )	$\leq 300$ V
Voltage protection level line-PE at 1 kV/ $\mu$ s C3 ( $U_p$ )	$\leq 500$ V
Cut-off frequency ( $f_c$ )	50 MHz
Operating temperature range	-25°C...+40°C
Degree of protection	IP 20
Connection (input / output)	RJ12 socket / RJ12 socket
Pinning	3/4
Earthing via	protective conductor connection
Enclosure material	thermoplastic, UL 94 V-2
Colour	pure white
Test standards	IEC 61643-21 / EN 61643-21

### Protection of the power side

Type Part No.	DPRO 230 NT 909 310
SPD according to EN 61643-11	type 3
SPD according to IEC 61643-1	class III
Nominal a.c. voltage ( $U_N$ )	230 V
Max. continuous operating a.c. voltage ( $U_C$ )	255 V
Nominal load current a.c. ( $I_L$ )	16 A
Nominal discharge current (8/20 $\mu$ s) ( $I_n$ )	3 kA
Total discharge current (8/20 $\mu$ s) [L+N-PE] ( $I_{total}$ )	5 kA
Combined impulse ( $U_{oc}$ )	6 kV
Combined impulse [L+N-PE] ( $U_{oc total}$ )	1 kV
Voltage protection level [L-N] ( $U_p$ )	$\leq 1.25$ kV
Voltage protection level [L/N-PE] ( $U_p$ )	$\leq 1.5$ kV
Response time [L-N] (I)	$\leq 25$ ns
Response time [L/N-PE] ( $t_A$ )	1 ns
Max. mains-side overcurrent protection (I)	16 A gL/gG or B 16 A
Short-circuit withstand capability for mains-side overcurrent protection	6 kA <sub>rms</sub>
Temporary overvoltage (TOV) [L-N] ( $U_T$ )	335 V / 5 sec.
Temporary overvoltage (TOV) [L/N-PE] ( $U_T$ )	400 V / 5 sec.
Temporary overvoltage (TOV) [L+N-PE] ( $U_T$ )	1200 V + $U_{CS}$ / 200 ms
TOV characteristic [L-N]	withstand
TOV characteristic [L/N-PE]	withstand
TOV characteristic [L+N-PE]	safe
Fault indication	red indicator light
Operating state indication	green indicator light
Number of ports	1
For mounting on	plug-in systems with earth contact DIN 49440/DIN 49441
Test standards	EN 61643-11
Weight	249,2 g
Customs tariff number	85363010
GTIN	4013364117747
PU	1 pc(s)