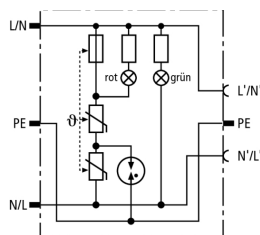


DPRO 230 (909 230)

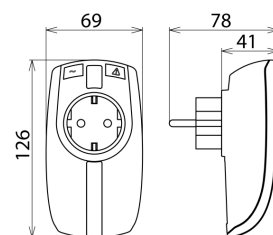
Surge protection with monitoring device and disconnecter
Visual operating state (green) and fault indication (red)
Enhanced safety due to distinctive Y protective circuit



Figure without obligation



Basic circuit diagram DPRO 230



Dimension drawing DPRO 230

Surge protective adapter

Type	DPRO 230
Part No.	909 230
SPD according to EN 61643-11	Type 3
SPD according to IEC 61643-1/-11	Class III
Nominal a.c. voltage (U_N)	230 V
Max. continuous operating a.c. voltage (U_C)	255 V
Nominal load current a.c. (I_L)	16 A
Nominal discharge current (8/20 μ s) (I_n)	3 kA
Total discharge current (8/20 μ s) [L+N-PE] (I_{total})	5 kA
Combined impulse (U_{OC})	6 kV
Combined impulse [L+N-PE] ($U_{OC total}$)	10 kV
Voltage protection level [L-N] (U_P)	≤ 1.25 kV
Voltage protection level [L/N-PE] (U_P)	≤ 1.5 kV
Response time [L-N] (t_A)	≤ 25 ns
Response time [L/N-PE] (t_A)	≤ 100 ns
Max. mains-side overcurrent protection	16 A gL/gG or B 16 A
Short-circuit withstand capability for mains-side overcurrent protection with 16 A gL/gG	6 kA _{ms}
Temporary overvoltage (TOV) [L-N] (U_T)	335 V / 5 sec.
Temporary overvoltage (TOV) [L/N-PE] (U_T)	400 V / 5 sec.
Temporary overvoltage (TOV) [L+N-PE] (U_T)	1200 V + U_{CS} / 200 ms
TOV characteristic [L-N]	withstand
TOV characteristic [L/N-PE]	withstand
TOV characteristic [L+N-PE]	safe
Fault indication	red light
Operating state indication	green light
Number of ports	1
Operating temperature range (T_U)	-25°C...+40°C
For mounting on	plug-in systems with earth contact according to DIN 49440 / DIN 49441
Enclosure material	thermoplastic, pure white, UL 94 V-2
Place of installation	indoor installations
Degree of protection	IP 20
Dimensions	126 x 69 x 41 mm
Weight	123 g
Customs tariff number	85363010
GTIN	4013364117686
PU	1 pc(s)

We reserve the right to introduce changes in performance, configuration and technology, dimensions, weights and materials in the course of technical progress. The figures are shown without obligation.