

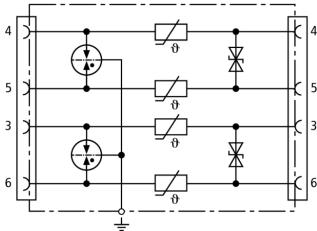


NET PRO TC 2 (929 071)

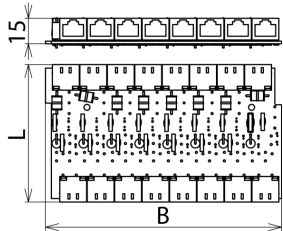
Patch panel or retrofit version
Integrated protection against power crossing
For installation in conformity with the lightning protection zones concept at the boundaries from 0_B –2 and higher



Figure without obligation



Basic circuit diagram NET PRO TC 2



Dimension drawing NET PRO TC 2

Surge protection component with eight unshielded ports for protecting telecommunications systems with analogue or system transmission from overvoltage and a.c. interference. PTC thermistors decouple the protection stages and thus additionally protect terminal equipment in case of power crossing. To be mounted into EG NET PRO 19" as retrofit or patch panel version (LSA).

Type	NET PRO TC 2
Part No.	929 071
Nominal voltage (U _N)	130 V
Max. continuous operating d.c. voltage (U _c)	170 V
Max. continuous operating a.c. voltage (U _c)	120 V
Nominal current (I _N)	150 mA
C2 Nominal discharge current (8/20 μs) per port (I _n)	10 kA
C2 Nominal discharge current (8/20 μs) per line (I _n)	2.5 kA
Voltage protection level line-line for I _n C2 (U _p)	≤ 250 V
Voltage protection level line-PG for I _n C2 (U _p)	≤ 600 V
Voltage protection level line-line at 1 kV/μs C3 (U _p)	≤ 230 V
Voltage protection level line-PG at 1 kV/μs C3 (U _p)	≤ 600 V
Series impedance per line	10 ohms
Cut-off frequency line-line (f _c)	10 MHz
Capacitance line-line (C)	≤ 300 pF
Capacitance line-PG (C)	≤ 15 pF
Operating temperature range	-40°C...+80°C
Degree of protection	IP 00
For mounting on	enclosure
Connection (input/output)	RJ45 / RJ45
Pinning	4/5, 3/6
Earthing via	enclosure
Dimensions (W x L)	135 x 77 mm
Test standards	IEC 61643-21 / EN 61643-21
Approvals	GOST
Weight	240 g
Customs tariff number	85363010
GTIN	4013364082823
PU	1 pc(s)

We reserve the right to introduce changes in performance, configuration and technology, dimensions, weights and materials in the course of technical progress. The figures are shown without obligation.