

## NET PRO E1 LSA G703 (929 075)

Patch panel version

Compliance with G.703 specification

For installation in conformity with the lightning protection zones concept at the boundaries from  $O_B - 2$  and higher

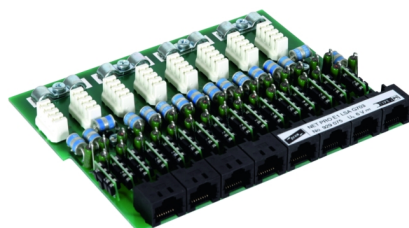
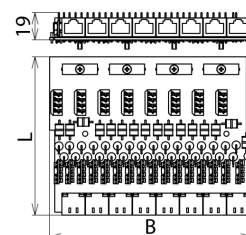
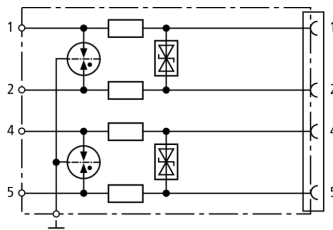


Figure without obligation



Surge protection component (patch panel version) with energy-coordinated protective circuits for two pairs with eight unshielded ports for E1 interfaces. To be mounted into EG NET PRO 19" and in distribution cabinets upstream of the telecommunications system. For 2 MBit/s transmissions according to G.703.

Type	NET PRO E1 LSA G703
Part No.	929 075
Nominal voltage ( $U_N$ )	5 V
Max. continuous operating d.c. voltage ( $U_c$ )	6 V
Max. continuous operating a.c. voltage ( $U_c$ )	4.2 V
Nominal current ( $I_L$ )	200 mA
C2 Nominal discharge current (8/20 $\mu$ s) per port ( $I_n$ )	20 kA
C2 Nominal discharge current (8/20 $\mu$ s) per line ( $I_n$ )	5 kA
Voltage protection level line-line for $I_n$ C2 ( $U_p$ )	$\leq 40$ V
Voltage protection level line-PG for $I_n$ C2 ( $U_p$ )	$\leq 500$ V
Voltage protection level line-line at 1 kV/ $\mu$ s C3 ( $U_p$ )	$\leq 15$ V
Voltage protection level line-PG at 1 kV/ $\mu$ s C3 ( $U_p$ )	$\leq 450$ V
Series impedance per line	1 ohm
Cut-off frequency line-line at 100 ohms ( $f_c$ )	210 MHz
Capacitance line-line (C)	$\leq 20$ pF
Capacitance line-PG (C)	$\leq 25$ pF
Operating temperature range	-40°C...+80°C
Degree of protection	IP 00
For mounting on	enclosure
Connection (input/output)	LSA / RJ45 socket
Pinning	1/2, 4/5
Earthing via	enclosure
Dimensions (W x L)	135 x 108 mm
Test standards	IEC 61643-21 / EN 61643-21
Approvals	GOST
Weight	250 g
Customs tariff number	85363010
GTIN	4013364107755
PU	1 pc(s)

We reserve the right to introduce changes in performance, configuration and technology, dimensions, weights and materials in the course of technical progress. The figures are shown without obligation.