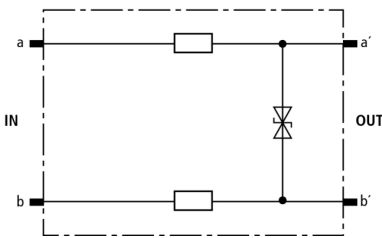




DRL RD 24 (907 442)

Low voltage protection level line/line for protecting terminal equipment
Energy-coordinated with DRL plug-in SPD block
For installation in conformity with the lightning protection zones concept at the boundaries from 1 – 2 and higher



Basic circuit diagram DRL RD

Protective plug (one pair), energy-coordinated with DRL plug-in SPD block, for use as single-stage protective device for terminal equipment. Low voltage protection level line-line for floating interfaces. To be mounted into EF 10 DRL. Installation recommended only in combination with DRL plug-in SPD block.

Type	DRL RD 24
Part No.	907 442
Nominal voltage (U _N)	24 V
Max. continuous operating d.c. voltage (U _C)	28 V
Max. continuous operating a.c. voltage (U _C)	19.5 V
Nominal current (I _N)	0.4 A
D1 Total lightning impulse current (10/350 µs) in combination with DRL 10 B... (I _{imp})	5 kA
D1 Lightning impulse current (10/350 µs) per line in combination with DRL 10 B... (I _{imp})	2.5 kA
C2 Total nominal discharge current (8/20 µs) in combination with DRL 10 B... (I _n)	10 kA
C2 Nominal discharge current (8/20 µs) per line in combination with DRL 10 B... (I _n)	5 kA
Voltage protection level line-PG for I _{imp} D1 in combination with DRL 10 B... (U _p)	≤ 500 V
Voltage protection level line-line at 1 kV/µs C3 (U _p)	≤ 36 V
Series impedance per line	2.2 ohms
Cut-off frequency line-line (f _c)	5.4 MHz
Capacitance line-line (C)	≤ 1.1 nF
Operating temperature range	-40°C...+80°C
Degree of protection	IP 20 (when plugged in)
Plugs into	LSA disconnection block 2/10 or DRL 10 B... plug-in SPD block
Enclosure material	polyamide PA 6.6
Colour	yellow
Test standards	IEC 61643-21 / EN 61643-21
Approvals	VdS, GOST
Weight	3,4 g
Customs tariff number	85363010
GTIN	4013364107700
PU	10 pc(s)

We reserve the right to introduce changes in performance, configuration and technology, dimensions, weights and materials in the course of technical progress. The figures are shown without obligation.