

DRL HD 5 (907 465)

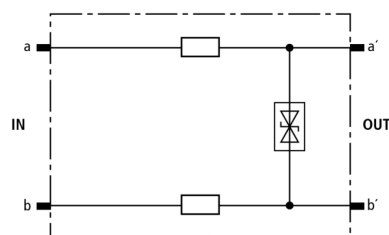
For maximum transmission rates

Energy-coordinated with DRL plug-in SPD block

For installation in conformity with the lightning protection zones concept at the boundaries from 1 – 2 and higher



Figure without obligation



Basic circuit diagram DRL HD

Protective plug (one pair), energy-coordinated with DRL plug-in SPD block, for use as single-stage protective device for terminal equipment for high-frequency transmissions such as G.703 or ISDN U_{2m} , S_{2m} and S_0 . To be mounted into EF 10 DRL. Installation recommended only in combination with DRL plug-in SPD block.

Type	DRL HD 5
Part No.	907 465
Nominal voltage (U_N)	5 V
Max. continuous operating d.c. voltage (U_C)	6.5 V
Max. continuous operating a.c. voltage (U_C)	4.6 V
Nominal current (I_L)	0.4 A
D1 Total lightning impulse current (10/350 μ s) in combination with DRL 10 B... (I_{imp})	5 kA
D1 Lightning impulse current (10/350 μ s) per line in combination with DRL 10 B... (I_{imp})	2.5 kA
C2 Total nominal discharge current (8/20 μ s) in combination with DRL 10 B... (I_n)	10 kA
C2 Nominal discharge current (8/20 μ s) per line in combination with DRL 10 B... (I_n)	5 kA
Voltage protection level line-PG for I_{imp} D1 in combination with DRL 10 B... (U_p)	≤ 500 V
Voltage protection level line-line at 1 kV/ μ s C3 (U_p)	≤ 25 V
Series impedance per line	2.2 ohms
Cut-off frequency line-line (f_c)	90 MHz
Capacitance line-line (C)	≤ 22 pF
Operating temperature range	-40°C...+80°C
Degree of protection	IP 20 (when plugged in)
Plugs into	LSA disconnection block 2/10 or DRL 10 B... plug-in SPD block
Enclosure material	polyamide PA 6.6
Colour	yellow
Test standards	IEC 61643-21 / EN 61643-21
Approvals	GOST
Weight	3,4 g
Customs tariff number	85363010
GTIN	4013364117822
PU	10 pc(s)

We reserve the right to introduce changes in performance, configuration and technology, dimensions, weights and materials in the course of technical progress. The figures are shown without obligation.