

# Compression Grounding

## YC / YCTN Lines Crimpfit

### Copper C-taps

#### Description

- Range taking C-shape connectors for tap or parallel connections of copper cable, mainly for grounding connections.

#### Construction

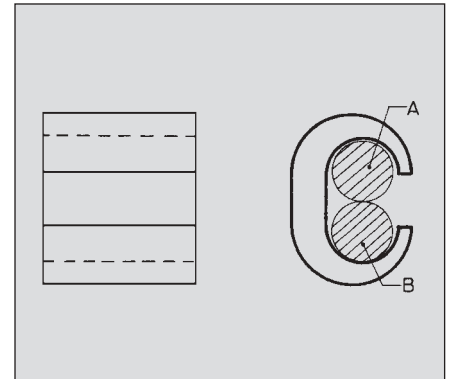
- Extruded electrolytic copper-thick wall
- TN for tin plated





#### Performance

- Can be installed in all weather conditions
- Heat resistant up to +105°C

#### Tooling

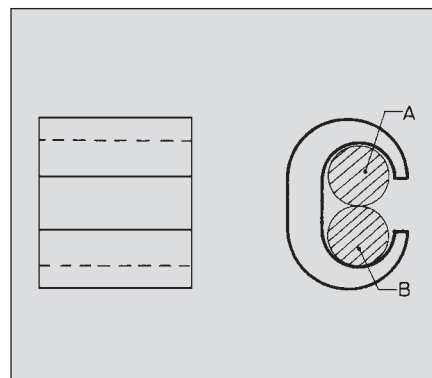
- The indicated numbers in the tooling table refer to pages 48 - 63.



Cat. No.	A			B			Pack Qty	Hydraulic tools					
	Ø min max	 mm²	 mm²	Ø min max	 mm²	 mm²		Y500CT BCT500 MD6	Y35/Y35BH Y750/Y750BH BAT35/BAT750	Y46	Y260D BHM	UK Y22BH	
YC10C10	1,6 2,8	2,5-4	4-6	1,6 2,8	2,5-4	4-6	100	W238 (1X)					
YC10C10 TN	1,6 2,8			1,6 2,8			100	W238 (1X)					
YC8C8	3,2 4,2	6-10	10	1,6 3,6	2,5-6	4-6-10	100	W162 (2X)					
YC8C8 TN	3,2 4,2			1,6 3,6			100	W162 (2X)					
YC4C8	4,1 6,7	10-25	35	2,3 3,6	4-6	4-6-10	500	WBG (1X)	UBG (1X)	U-DIES WIYH ADAPTOR PUADP	U-DIES WIYH ADAPTOR 26UADP	U-DIES WIYH ADAPTOR 22UADP	
YC4C8 TN	4,1 6,7			2,3 3,6			4-6						4-6-10
YC4C6	5,1 6,7	16-25	35	2,3 4,1	4-10	4-6-10	500						
YC4C6 TN	5,1 6,7			2,3 4,1			4-10						4-6-10
YC4C4	5,1 6,7	16-25	25-35	4,2 6,7	16-25	25-35	500	MD6BG (2X)					
YC4C4 TN	5,1 6,7			4,2 6,7			16-25						25-35
YC25 MTN	5,1 6,7	16-25	25-35	4,2 6,7	16-25	25-35	500	W140BGE2T					12DE140
YC2C4	7,5 8,0			35			50	2,3 6,4					4-25
YC2C4 TN	7,5 8,0	2,3 6,4	4-25		25	25							
YC2C2	7,5 8,0	35	50	5,1 8,0	16-35	25-35-50	250						
YC2C2 TN	7,5 8,0			5,1 8,0				16-35					25-35-50
YC35 MTN	7,5 8,0	35	50	5,1 8,0	16-35	25-35-50	250	W173BGE2T					12DE1739
YC26C2	8,8 10,8			50-70					2,3 7,7	4-35	4-6-10-25 35	100	WE (3X)
YC26C2 TN	8,8 10,8	2,3 7,7	4-35		4-6-10-25 35	10							
YC26C26	8,8 10,8	50-70		7,8 10,8	35-70	50	100						
YC26C26 TN	8,8 10,8			7,8 10,8				35-70	50	10			
YC50 MTN	8,8 10,8	50-70		7,8 10,8	35-70	50	100	W173BGE2T	12DE1739				

# Compression Grounding

## YC / YCTN Lines Crimpit



Cat. No.	A			B			Pack Qty	Hydraulic tools							
	Ø min max	✱ mm²	⊘ mm²	Ø min max	✱ mm²	⊘ mm²		Y500CT BCT500	Y35/Y35BH Y750/Y750BH BAT35/BAT750	Y46	Y260D BHM	UK Y22BH			
YC28C2	11,0 13,2	95		5,1 7,8	16-35	35	50		UF (3X)	U-DIES WIYH ADAPTOR PUADP	U-DIES WIYH ADAPTOR 26UADP	U-DIES WIYH ADAPTOR 22UADP			
YC28C2 TN	11,0 13,2	95		5,1 7,8	16-35	35	10								
YC28C26	11,0 13,2	95		7,8 10,8	35-70	50	50								
YC28C26 TN	11,0 13,2	95		7,8 10,8	35-70	50	10								
YC28C28	11,0 13,2	95		11,0 13,2	95	50	50								
YC28C28 TN	11,0 13,2	95		11,0 13,2	95	50	10								
YC29C29	14,0	120		6,3 14,0	25-120	35-50	50		U708 (3X)				U-DIES WIYH ADAPTOR PUADP	U-DIES WIYH ADAPTOR 26UADP	U-DIES WIYH ADAPTOR 22UADP
YC29C29 TN	14,0	120		6,3 14,0	25-120	35-50	10								
YC31C28	15,7 6,7	150-185		9,0 12,5	50-95		50								
YC31C28 TN	15,7 6,7	150-185		9,0 12,5	50-95		10								
YC150M	15,7	150		10,5 15,7	70-150		25								
YC150M TN	15,7	150		10,5 15,7	70-150										
YC185M	14,0 17,7	120-185		12,5 17,5	95-185		25		U1011 (3X)	P1011	26MC 185M	Consult			
YC185M TN	14,0 17,7	120-185		12,5 17,5	95-185										